



New Approach to Optimal Distribution System Planning for Productivity Improvement Using Genetic Algorithm

Mahdi Mozaffari Legha¹, Asef Doroshteh²

¹Department of Power Engineering, Institute of Higher Education Javid, Jiroft, Iran

Email: m.mozaffarilegha@javid.ac.ir

²Education iranshahr, Iran. Email: Asef.doroshteh@gmail.com

Abstract: In medium voltage electrical distribution networks, prevent the loss reduction is very important and certainly in line with this, system engineering issue and use of proper equipment, a good work has been done. Development of distribution systems result in higher system losses and poor voltage regulation. Consequently, an efficient and effective distribution system has become more urgent and important. Hence proper selection of conductors in the distribution system is important as it determines the current density and the resistance of the line. Evaluation aging conductors for losses and costs imposed in addition to the careful planning of technical and economic networks can be identified in the network design. This paper examines the use of different evolutionary algorithms, imperialist competitive algorithm (GA) to optimal branch conductor Selection and Reconstruction In view of the aging conductors in planning radial distribution systems with the objective to minimize the overall cost of annual energy losses and depreciation on the cost of conductors in order to improve productivity. Simulations are carried out on 69-bus radial distribution network using GA approaches in order to show the accuracy as well as the efficiency of the proposed solution technique.

Keywords: radial distribution systems, genetic algorithm, Backward-Forward sweep, Loss Reduction, Aging conductors.

INTRODUCTION

The main objective of an electrical distribution system (EDS) is providing a reliable and cost-effective service to consumers with considering power quality within standard ranges. Thus, it is necessary to properly plan the EDS and thus evaluate several aspects such as, new equipment installation cost, equipment utilization rate, quality of service, reliability of the distribution system and loss minimization, considering an increase of system loads, and newly installed loads for the planning horizon [1]. There are several parameters to be taken into account to model the conductor size selection (CSS) problems such as: conductor's economic life, discount rate, cable and installation costs and type of circuit (overhead or underground) [2]. Dynamic programming approach was utilized to solve the CSS problem in [3]. They presents models to represent feeder cost, energy loss and voltage regulation as a function of a conductor cross-section. In [4], the conductor size selection performed with consideration of financial and engineering criteria in the feeder. In [5] and [6] the CSS problem is solve using heuristic methods. Reference [5] uses a selection phase by means of economic criteria, followed by a technical selection using a sensitivity index that seeks to ensure a feasible operation of the EDS, whereas [6] presents a heuristic method using a novel sensitivity index for the reactive power injections. The heuristic methods are robust, easily applied; however, they normally converge to a local optimum solution. In some studies, a linear approximation in the calculation of power losses or voltage regulation is considered [7], while other approximates the load as a constant current model [3]. In [7], a mixed integer linear model for the

problem of conductor selection size in radial distribution systems is presented. In this model, the behavior of the power type load is assumed to be constant. Several studies have used evaluative techniques to solve the CSS problem [8]–[10]. In [11] the optimal CSS placement is solved using a genetic algorithm.

In this paper, optimal type of conductor selection is proposed for planning radial distribution systems using different evolutionary algorithms, imperialist competitive algorithm (GA), genetic algorithm (GA). The objective is minimizing the overall cost of annual energy losses and depreciation on the cost of conductors in order to improve productivity with considering the maximum current carrying capacity and acceptable voltage levels. Moreover, we utilize the Backward-Forward sweep method which is simple, flexible, reliable, and didn't need Jacobean matrix and its inverse and have high convergence speed.

1. Optimal conductor size selection

The conductor size selection problem involves determining the optimal conductor configuration for a radial distribution system, using a set of types of conductors. Each type of conductor has the following characteristics: 1) resistance per length, 2) reactance per length, 3) maximum current capacity, 4) cross-sectional area and 5) building cost per length.

2. Power Flow Analysis Method.

The methods proposed for solving distribution power flow analysis can be classified into three categories: Direct methods, Backward-Forward sweep methods and Newton-Raphson (NR) methods. The Backward-Forward Sweep method is an iterative means to solving the load flow equations of radial distribution systems which has two steps. The Backward sweep, which updates currents using Kirchhoff's Current Law (KCL), and the Forward sweep, which updates voltage using voltage drop calculations [12].

The Backward Sweep calculates the current injected into each branch as a function of the end node voltages. It performs a current summation while updating voltages. Bus voltages at the end nodes are initialized for the first iteration. Starting at the end buses, each branch is traversed toward the source bus updating the voltage and calculating the current injected into each bus. These calculated currents are stored and used in the subsequent Forward Sweep calculations. The calculated source voltage is used for mismatch calculation as the termination criteria by comparing it to the specified source voltage. The Forward Sweep calculates node voltages as a function of the currents injected into each bus. The Forward Sweep is a voltage drop calculation with the constraint that the source voltage used is the specified nominal voltage at the beginning of each forward sweep. The voltage is calculated at each bus, beginning at the source bus and traversing out to the end buses using the currents calculated in previous the Backward Sweep [12].

3. Aging conductors analysis

Conductors from the construction phase to the operational phase of destruction are affected by a variety of Each of these factors can cause the kind of damage such as wear and finally decided to enter the power network or utility side. Evaluation conductors of electrical distribution networks are a very important role in asset management systems. In this paper feeder conductors used in networks Kosar, Zafar Post, with 18.74 Km of the Kerman area Inclusive conductors such as Hayna, Doug and Mink. Also in this paper with coordination of the Kerman province north of electricity distribution companies Examples of the conductors such Hayna, dog and mink suffering of life measures were collected at 2 m. According to the information network each section was determined by the electricity distribution network. After collection, the conductors in the cable and wire industry, LAB Wire and cable Kerman conductor resistance and corrosion rate measurements were conductors. Conductor resistance test results for each of the years indicated in Table 1.

Table 1: Analysis Conductors properties

A [mm ²]	R [Ω/km]	Year
70	0.4545	new
70	0.4580	1
70	0.4760	38
120	0.2712	new
120	0.3320	42
126	0.1576	new

126	0.2130	24
126	0.2430	26

1 km = 1000meter

4. Objective Function

The objective is selection of conductor's size from the available size in each branch of the system which minimizes the sum of depreciation on capital investment and cost of energy losses and ... reliability while maintaining the voltages at different buses within the limits. In this case, the objective function with conductor c in branch i is written as

$$\text{Min } f(i, c) = w1 * CE(i, c) + w2 * DCI(i, c) + w3 * C_{ENS}$$

Subject to

$$V_{min} \leq |V_i| \leq V_{max} \quad i = 1, 2, 3, \dots, n$$

$$|I_j| \leq I_{max} \quad j = 1, 2, 3, \dots, n - 1$$

Where $CE(i, c)$ is the Cost of Energy Losses and C_{ENS} is the Cost of ... reliability and $DCI(i, c)$ is Depreciation on Capital Investment of c conductor type of i -th branch, n is buss number, i is the branch number and w is the weighting factor[13]. The annual cost of loss in branch i with conductor type k is,

$$CE(i, c) = P L(i, c) * \{K_P + K_E * \delta * T\}$$

Where K_p is annual demand cost due to Power Loss (\$/kW), K_E is annual cost due to Energy Loss (\$/kWh), δ is Loss factor, ($PL_{(i,c)}$) is real Power Loss of branch i under peak load conditions with conductor type c and T is the time period in hours (8760 hours). Depreciation on capital investment is given as

$$DCI(i, c) = \gamma * A(c) * \{C_c + \alpha L_i\}$$

Where γ is Interest and depreciation factor, C_c is cost of type conductor (\$/km), (A_c) is cross-sectional area of c type conductor and L_i is length of branch i (km).

$$C_{ENS} = \frac{h}{8760} \times \sum_i U_i \times PL_i \times Cost_Shed$$

Where C_{ENS} the cost of energy not supplied (\$); U_i : i mean outage times a year (hour/year); $Cost_Shed_i$: Cost of outage time (\$/Kwh). PL_i Average time to confirm any of the loads of the network is obtained from the following equation

$$U_i = \sum_j \lambda_{ij} \times r_j$$

λ_{ij} : Number of failures per year for equipment failures that result in lost time, i is the j . r_j : The average time required to fix your equipment after each fault j (hour).

4.1. Genetic Algorithm

GA's are generalized search algorithms based on the mechanics of natural genetics [14]. GA maintains a population of individuals that represent the candidate solutions to the given problem. Each individual in the population is evaluated to give some measure to its fitness to the problem from the objective function. GA's combine solution evaluation with stochastic operators namely, selection, crossover and mutation to obtain optimality. The flow chart of proposed GA is depicted in Fig. 1.

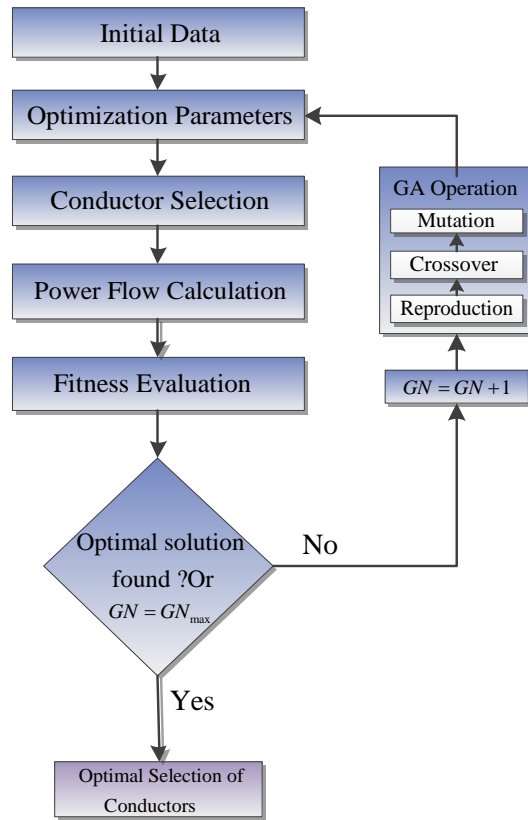


Fig 1. Flowchart of the proposed GA algorithm

5. Tests and Results

Simulations are carried out on 69-bus radial distribution network using GA approach in order to show the accuracy as well as the efficiency of the proposed solution technique. The single line diagram for proposed radial distribution systems is shown in Fig. 3. Length of all branches is considered to be equal to 60m. The properties of the new conductors used in the analysis of this system are given in Table 1. The initial data for load flow solution based on the Backward-Forward sweep are selected as: . The other parameters used in computation process are: KP = 1.04 (\$/kW); KE = 0.012 (\$/kWh).

Table 1: Conductor properties

Type	R [Ω/km]	X [Ω/km]	Cmax [A]	A [mm ²]	Cost [Toman/m]
Hyena	0.1576	0.2277	550	126	2075
Dog	0.2712	0.2464	440	120	3500
Mink	0.4545	0.2664	315	70	2075

1 km = 1000meter

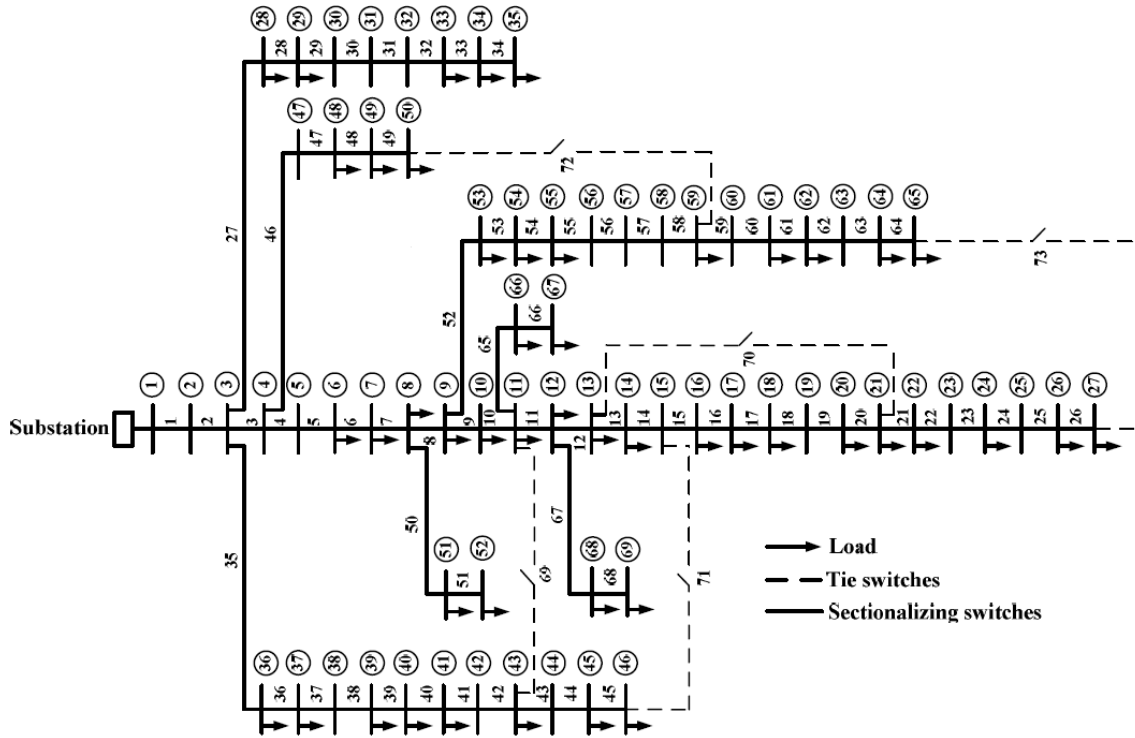


Fig 3. Single line diagram for a 69-bus radial distribution system.

The parameters used in GA algorithm are: Number of iterations is 33; Population size is 100; Cross over probability is 0.8; and Mutation probability is 0.01. Also, loss factor, which represents adequately the energy losses for the load level in terms of the maximum power losses are selected. Convergence values for GA fitness functions are illustrated in Fig. 4; the results of conductor selection are shown in Table 2.

Table 2: Conductor selection results.

Conductor Design Method	Type	Branch Number
Conventional	Hyena	From 1 to 26
	Dog	Rest of 68 branches
	Mink	---
GA Based New Conductors	Hyena	20,21,28,38,43
	Dog	
	Mink	Rest of 68 branches
GA Based New & Aging Conductors	Hyena	From 1 to 13
	Dog	33,34,41,42,43,44,45 61,62,63,64
	Mink	Rest of 68 branches

The voltage profile and Power loss in the system after GA implementation is compared with Conventional conductor design and depicted in Fig. 5 and Fig. 6. It can be seen that the voltage profile achieved by GA optimization algorithms are almost the same while having better improvement in compare with Conventional method. Moreover, a decrease in peak power loss based on peak power loss profiles is illustrated. The total power loss is shown in Fig. 7 and the costs based on conductor selection are compared in Table 3. The real power loss reductions are 579.4903 kW, which is approximately 5.4% in compare with the Conventional design for GA respectively. Proceedings in a similar manner, the total cost reduction (sum of annual cost of power loss and depreciation on capital investment cost) are obtained 27% for GA respectively.

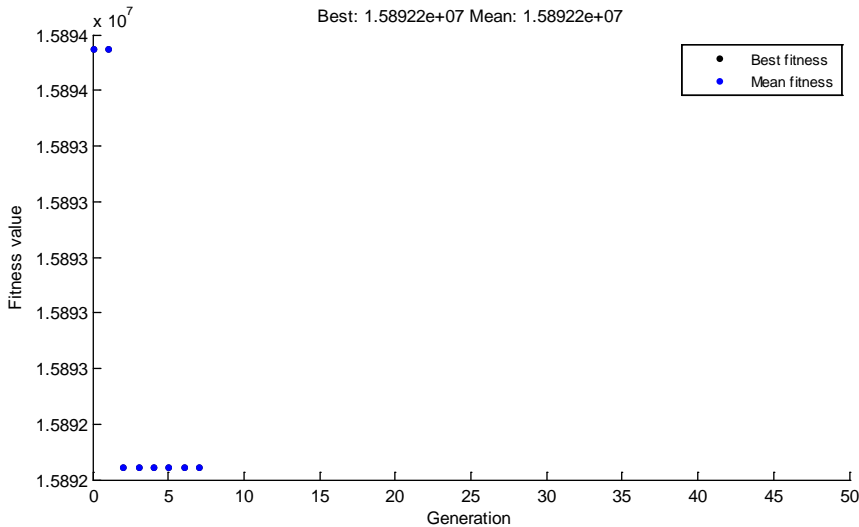


Fig 4. Convergence values for GA fitness functions.

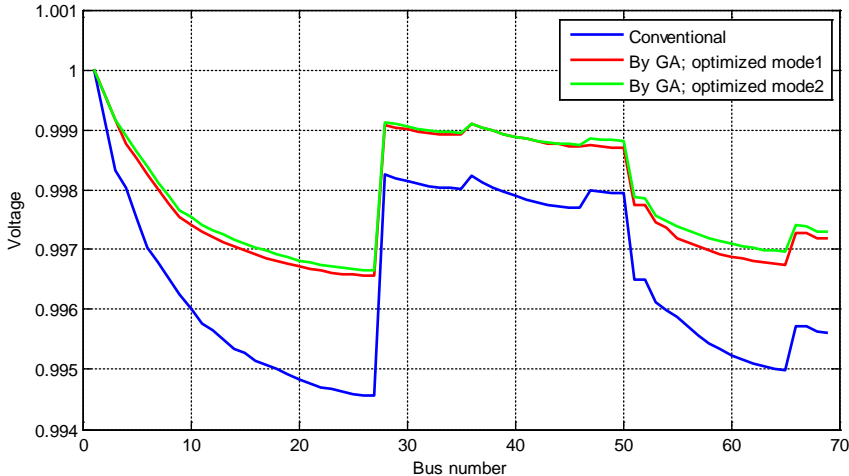


Fig 5. Voltage profiles of 69-bus system. Mode1: optimization using GA with consideration of aging conductors; Mode2: optimization using GA with consideration of new conductors

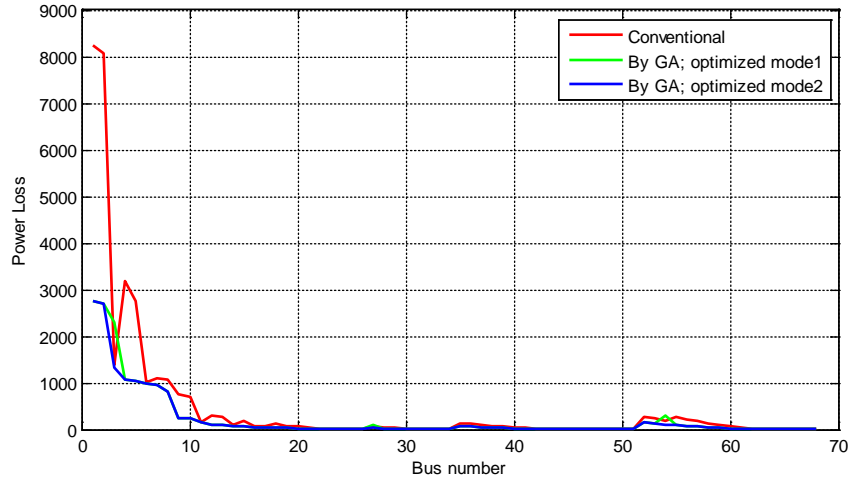


Fig 6. Peak power loss profiles in each branch. Mode1: optimization using GA with consideration of aging conductors; Mode2: optimization using GA with consideration of new conductors

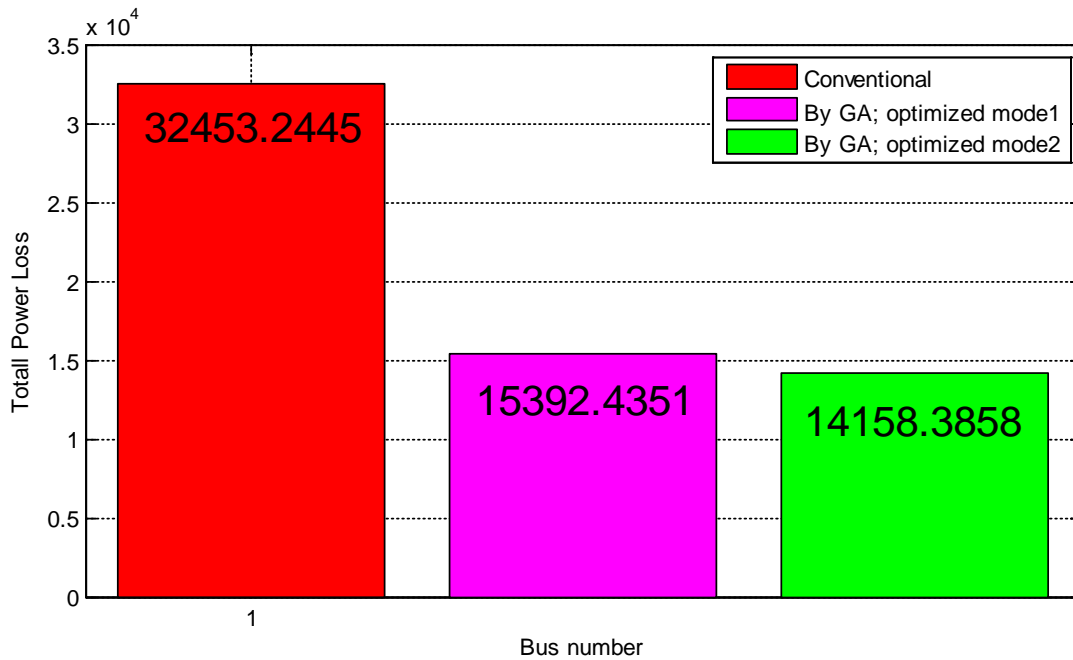


Fig 7 : Total power loss for different conductor selections method. Mode1: optimization using GA with consideration of aging conductors; Mode2: optimization using GA with consideration of new conductors

Table 3 : Obtained Loss results.

Method	Total Loss [W]	Total Cost [Toman]
Conventional	32453.24452	21136896
GA with consideration of new conductors	15392.43506	48629196

GA with consideration of new & aging conductors	14158.38579	52864416
1 \$ = 3200 Toman		

6. Conclusion

Optimal selection of conductor type for planning radial distribution systems using evolutionary approaches is presented with the objective to minimize the overall cost of annual energy losses and depreciation on the cost of conductors in order to improve productivity. The power losses, voltage magnitude, and current flow magnitudes are calculated using the Backward-Forward sweep method.

The performance of the proposed evolutionary approaches (GA) in comparison with a conventional method is investigated using a 69-bus radial distribution network. The power loss reduction and voltage profile improvement has been successfully achieved which demonstrate the effectiveness of the proposed approaches. The results offer potential of using GA for improving plant productivity and economy.

References

- [1] M. Mozaffari Legha, (2011) Determination of exhaustion and junction of in distribution network and its loss maximum, due to geographGA condition, MS.c Thesis. Islamic Azad University, Saveh Branch, Markazi Province, Iran.
- [2] G. J. Anders, M. Vainberg, D. J. Horrocks, S. M. Foty, J. Motlis, and J. Jarnicki, Parameters affecting economic selection of cable sizes," IEEE Trans. Power Del., vol. 8, no. 4, pp. 1661–1667, Oct. 1993.
- [3] M. Ponnaivaikko and K. S. Prakasa, "An approach to optimal distribution system planning through conductor gradation," IEEE Trans. Power App. Syst., vol. PAS-101, no. 6, pp. 1735–1742, Jun. 1982.
- [4] S. Mandal and A. Pahwa, "Optimal selection of conductors for distribution feeders," IEEE Trans. Power Syst., vol. 17, no. 1, pp. 192–197, 2002.
- [5] Z. Wang, H. L. Yu, X. Wang, and H. Song, "A practGA approach to the conductor size selection in planning radial distribution systems," IEEE Trans. Power Del., vol. 15, no. 1, pp. 350–354, Jan. 2000.
- [6] H. Zhao, Z. Wang, D. C. Yu, L. Zhou, and X. Chen, "Integrated methodology of reactive planning and conductor sizing in radial distribution," in Proc. 2005 Power Engineering Society General Meeting, San Francisco, CA, Jun. 12–16, 2005, pp. 280–285.
- [7] M. J. Rider, M. Lavorato, R. Romero, "Optimal Conductor Size Selection and Reconductoring in Radial Distribution Systems Using a Mixed-Integer LP Approach", Power Systems, IEEE Transactions on, (doi: 10.1109/TPWRS.2012.2201263), 2012
- [8] F. Mendoza, D. Requena, J. L. Bernal-Agustin, and J. A. Dominguez- Navarro, "Optimal conductor size selection in radial power distribution systems using evolutionary strategies," in Proc. IEEE/PES Transmission & Distribution 2006 Latin AmérGA, Venezuela, 15–18, 2006, pp. 01–05.
- [9] R. Ranjan, A. Chaturvedi, P. S. Solanki, and D. Das, "Optimal conductor selection of radial distribution feeders using evolutionary programming," in Proc. 2003 IEEE Region 10 Conf. Convergent Technologies for the Asia-Pacific (TENCON 2003), Bangalore, India, 15–17, 2003, vol. 1, pp. 456–459.
- [10] R. S. Rao, "Optimal conductor selection for loss reduction in radial distribution systems using differential evolution," Int. J. Eng. Sci. Technol., vol. 2, no. 7, pp. 2829–2838, Jul. 2010.
- [11] M. Vahid, N. Manouchehr, S. D. Hossein, and A. Jamaledin, "Combination of optimal conductor selection and capacitor placement in radial distribution systems for maximum loss reduction," in Proc. 2009 IEEE Int. Conf. Industrial Technology, Gippsland, Australia, Feb. 10–13, 2009, pp. 01–05.
- [12] N. Medina, M.M. Qi, L. Butler-Purry, K.L. A Three Phase Load Flow Algorithm for Shipboard Power Systems (Sps), 2003.
- [13] T. Gönen, Electric Power Distribution Systems Engineering. New York: McGraw-Hill, 1986.
- [14] D.E. Goldberg, "Genetic Algorithms in search, optimization and Machine learning." Addison –Wesley, Reading M.A, 1989.
- [15] E. Atashpaz-Gargari, C. Lucas, "Imperialist competitive algorithm: an algorithm for optimization inspired by imperialistic competition". IEEE CongrEvolComput 2007:4661–7.